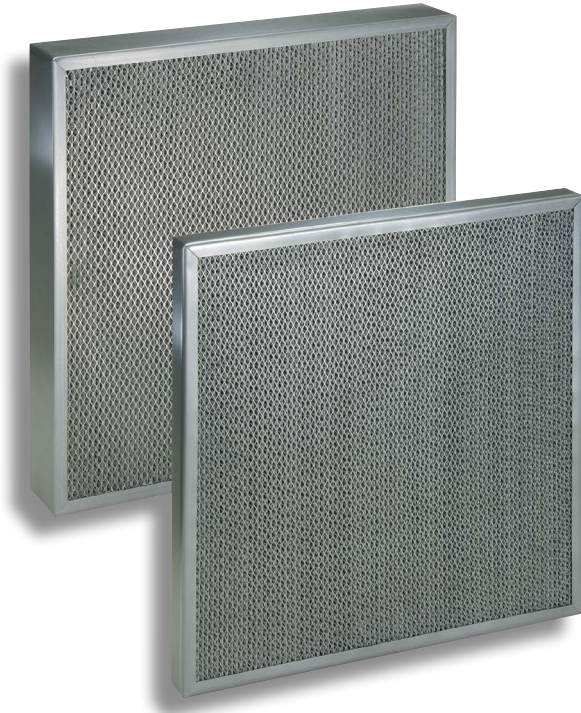


Multi-Cell™ CS

Compact Size High Efficiency
Extended Surface Filters



Features

- High efficiency microfiberglass filter media
- Available in three efficiencies: **MERV 14, MERV 13, and MERV 11**
- Maximum operating temperature: **750°F**
- Precision crafted corrugated aluminum separators
- Compact design **2" or 4" depth**
- Durable aluminized frame

Multi-Cell CS Filters

Multi-Cell CS Filters are rigid, extended surface panel filters designed to provide high efficiency filtration in a compact, space-saving 2" or 4" deep frame.

Multi-Cell CS Filters are constructed with a micro-fiberglass air filter media engineered specifically for high efficiency applications. The media is pleated around precision crafted, corrugated aluminum separators to insure proper airflow. The pleated media pack is then sealed in a rugged but lightweight aluminized steel frame.

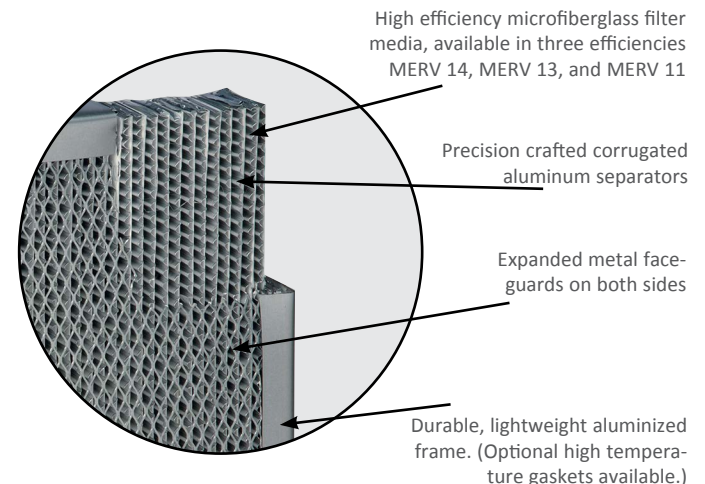
Versatile Application Uses

Multi-Cell CS Filters can be used in any air filter application, and are especially useful for upgrading the efficiency of filtration systems which presently have limited room for expansion or modification. The compact 2" or 4" depth enables the user to upgrade from standard pleated filters or other 2" and 4" low efficiency filters with no modification of the frames or housings.

UL Classified

Multi-Cell CS Filters are UL Classified and can operate in high temperature applications up to 750°F. This capability makes the **Multi-Cell CS** an ideal choice for applications such as automotive paint booths and other industrial coatings operations where high temperature conditions are common.

Multi-Cell CS Construction



Nominal Size	Actual Size	Air Flow Capacity (CFM) @500 FPM	Initial Resistance (in. W.G.)			Recommended Final Resistance (in. w.g.)	Media Area (Sq. ft.)
			MERV 14	MERV 13	MERV 11		
24x24x2	23.38 x 23.38 x 1.75	1000	0.46	0.43	0.28	1.5	42
20x25x2	19.38 x 24.38 x 1.75	875	0.46	0.43	0.28	1.5	37
20x24x2	19.38 x 23.38 x 1.75	825	0.46	0.43	0.28	1.5	35
20x20x2	19.38 x 19.38 x 1.75	700	0.46	0.43	0.28	1.5	29
18x24x2	17.38 x 23.38 x 1.75	750	0.46	0.43	0.28	1.5	32
16x25x2	15.38 x 24.38 x 1.75	700	0.46	0.43	0.28	1.5	29
16x20x2	15.38 x 19.38 x 1.75	550	0.46	0.43	0.28	1.5	24
12x24x2	11.38 x 23.38 x 1.75	500	0.46	0.43	0.28	1.5	21
24x24x4	23.38 x 23.38 x 3.75	2000	0.65	0.55	0.40	1.5	94
20x25x4	19.38 x 24.38 x 3.75	1750	0.65	0.55	0.40	1.5	84
20x24x4	19.38 x 23.38 x 3.75	1650	0.65	0.55	0.40	1.5	82
20x20x4	19.38 x 19.38 x 3.75	1400	0.65	0.55	0.40	1.5	65
18x24x4	17.38 x 23.38 x 3.75	1500	0.65	0.55	0.40	1.5	70
16x25x4	15.38 x 24.38 x 3.75	1400	0.65	0.55	0.40	1.5	65
16x20x4	15.38 x 19.38 x 3.75	1100	0.65	0.55	0.40	1.5	52
12x24x4	11.38 x 23.38 x 3.75	1000	0.65	0.55	0.40	1.5	46

Notes:

- Recommended Final Pressure Drop is 1.5" w.g. • Air Flow capacity (CFM): 2" deep filters are 250 FPM and 4" deep filters are 500 FPM
- Performance data is based on ASHRAE Test Standards 52.2-2012.
- For applications where temperature exceeds 350 F, do not exceed filter rated velocity and final resistance of 1.2" W.G..



8401 Air Commerce Drive, Louisville, KY 40219
toll free: 800.757.5624 | phone: 502.634.4796 | Fax: 502.969.2364
info@kochfilter.com | www.kochfilter.com